

Digital Undercounter Refrigerated Counter Saladette - 250lt, 2 Door

ITEM # _____

MODEL # _____

NAME # _____

SIS # _____

AIA # _____


728628 (PTR259)

2-door refrigerated preparation table with marble Top 250lt, +2+10°C, AISI 304

Short Form Specification

Item No. _____

Constructed entirely in 304 AISI stainless steel. Marble top. Can accommodate 5 GN 1/6 containers. High-density expanded polyurethane foam, 50 mm in thickness, with cyclopentane injection. Height-adjustable feet. Lower refrigerated compartment designed to accommodate GN 1/1 containers and equipped with N. 2 hinged doors. Built-in refrigeration unit. Ventilated. Refrigerant R134a. Digital control panel. Automatic evaporation of defrost water. Drain outlet. Suitable to operate in ambient temperatures up to +32°C. Temperature range: +2+10°C. CFC and HCFC free.

Main Features

- Suitable for use in ambient temperatures of up to 32 °C.
- Adjustable temperature range from 2 °C to 10 °C to suit meat, fish and dairy storage requirements.
- Anti-tilt runners accept GN 1/1 containers.
- Digital control panel.
- Forced air circulation for rapid cooling and an even temperature distribution.
- 60 mm insulation for energy saving.
- Marble worktop suitable for 5 GN 1/6 containers.
- Drain outlet and automatic evaporation of defrost water.

Construction

- CFC and HCFC free (ecological refrigerant type: R134a, - gas in foam: cyclopentane).
- Mounted on legs with height adjustment.
- Built-in compressor to suit operating conditions.
- Constructed from AISI 304 Stainless steel throughout to meet the highest hygiene standards.
- Rounded internal corners for ease of cleaning.
- Access to all components from the front.
- Developed and produced in ISO 9001 and ISO 14001 certified factory.

Optional Accessories

- Ethernet connector for IR33 (CAREL) Refrigerated Cabinets and Counters PNC 880252
- 1/1GN grey rilsan grid PNC 881435

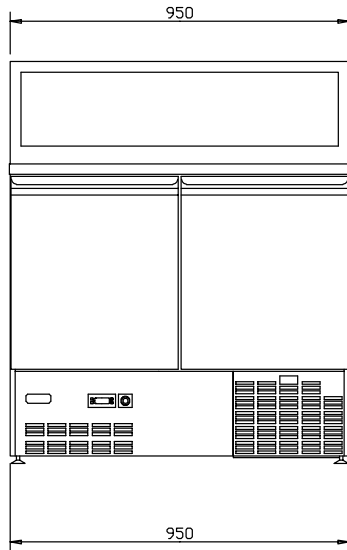
APPROVAL: _____



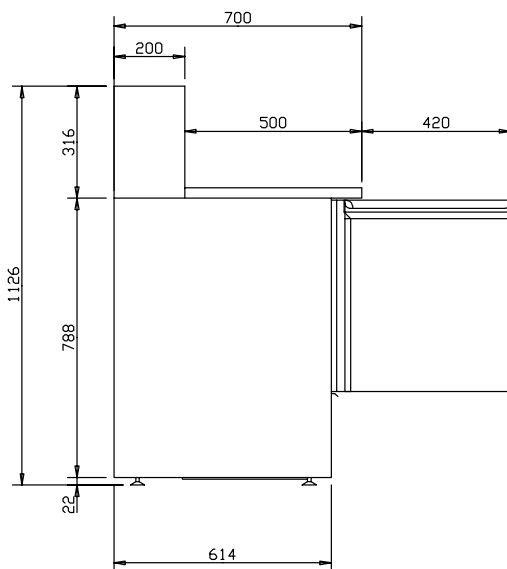
Electrolux
PROFESSIONAL

Digital Undercounter Refrigerated Counter Saladette - 250lt, 2 Door

Front

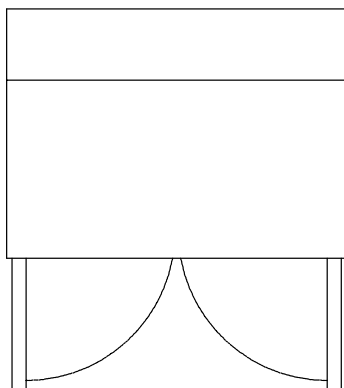


Side



EI = Electrical inlet (power)

Top



Electric

Supply voltage:

728628 (PTR259)

220-240 V/1 ph/50 Hz

Key Information:

Gross capacity:

250 lt

Net Volume:

140 lt

Door hinges:

1 Left+1 Right

Built-in Compressor and Refrigeration Unit

External dimensions, Width:

950 mm

External dimensions, Depth:

700 mm

External dimensions, Height:

1126 mm

Depth with doors open:

1120 mm

Height adjustment:

0/0 mm

Refrigeration Data

Compressor power:

1/5 hp

Refrigerant type:

R134a

Refrigeration power:

253 W

Refrigerant weight:

120 g

Product Information (EU Regulation 2015/1094)

Energy Class:

Yearly and daily energy consumption:

Climate class:

Energy Efficiency Index (EEI):

Digital Undercounter Refrigerated Counter Saladette - 250lt, 2 Door

The company reserves the right to make modifications to the products without prior notice. All information correct at time of printing.

2022.01.05